



# AYUSH ENTERPRISES

PEB ENGINEERING & CONSTRUCTIONS



**Factory & Office Address:**

GAT NO. 175, GANESH NAGAR, BEHIND MSEB OFF, RUPINAGAR, TALAWADE, PUNE-411062

**Mail-Id:-** [info@aayushpeb.com](mailto:info@aayushpeb.com); [sales@aayushpeb.com](mailto:sales@aayushpeb.com)

**Website:-** [www.aayushpeb.com](http://www.aayushpeb.com)

**Contact's No.** + 91 7507778562 /8380015680

Established in year 2015. **Ayush Enterprises** is Manufacturing company of Pre-Engineered Steel buildings & Industrial fabrication. We design fabricate and deliver steel buildings on time and on budget.

We define quality and committed to excellence. We provide a comprehensive solution right from a project briefing to the final on-site installation. The organization on the whole provides complete and the most economical building solutions under one roof. We have completed several Industrial Projects at various locations in Maharashtra and other states of India.

## **Vision**

To be the most reliable and innovative manufacturer, service and solution provider in the Pre-Engineered Steel buildings.

## **Mission**

To contribute to success of our clients by providing a quality, professional & timely service and cost effective solutions.

- Create Ayush as a brand for quality with economy
- To achieve financial success for our partners; and
- To be worthy citizens of the communities we live and work.





# COMPANY PROFILE

- Name of Company** :- **AYUSH ENTERPRISES,PUNE.**
- Date Of Establish** :- Year 2015
- Off & Factory Add** :- Gat no.175, Ganesh Nagar, Behind MSEB  
Off. Rupinagar , Talawade, Pune – 411062
- Mail-Id** :- [info@aayushpeb.com](mailto:info@aayushpeb.com) ; [sales@aayushpeb.com](mailto:sales@aayushpeb.com)
- Website** :- [www.aayushpeb.com](http://www.aayushpeb.com)
- Contact's No.** :- +91 7507778562 /8380015680
- Turnover** :- Rs. 3.5 Corers. ( 35 Million INR)
- Bankers** :- The Vishweshwar Sahakari Bank Ltd.  
Nigdi, Pune.
- PAN** :- BBTPK4138C
- GST** :- 27BBTPK4138C1ZK

**Pre engineered buildings** are the fastest systems of modern day construction, combining result of Speed, functionality and durability. The concept of primary members, secondary members, and the cover sheeting connected to each other. The structural members are custom designed to be lighter in weight as well as high in strength.

Our Pre-engineered steel systems make the erection process simpler and faster, giving you flexibility paired with aesthetic appearance. Applications of pre-engineered buildings are numerous. Pre-engineered buildings are ideal for any non-residential low-rise building. The system can meet the demands of greater expanse with the use of interior columns. Tapered column rigid frames are combined with interior pipe columns and bypass sidewall girts. Large manufacturing warehouses and commercial operations rely upon this system where economy is of the utmost importance.



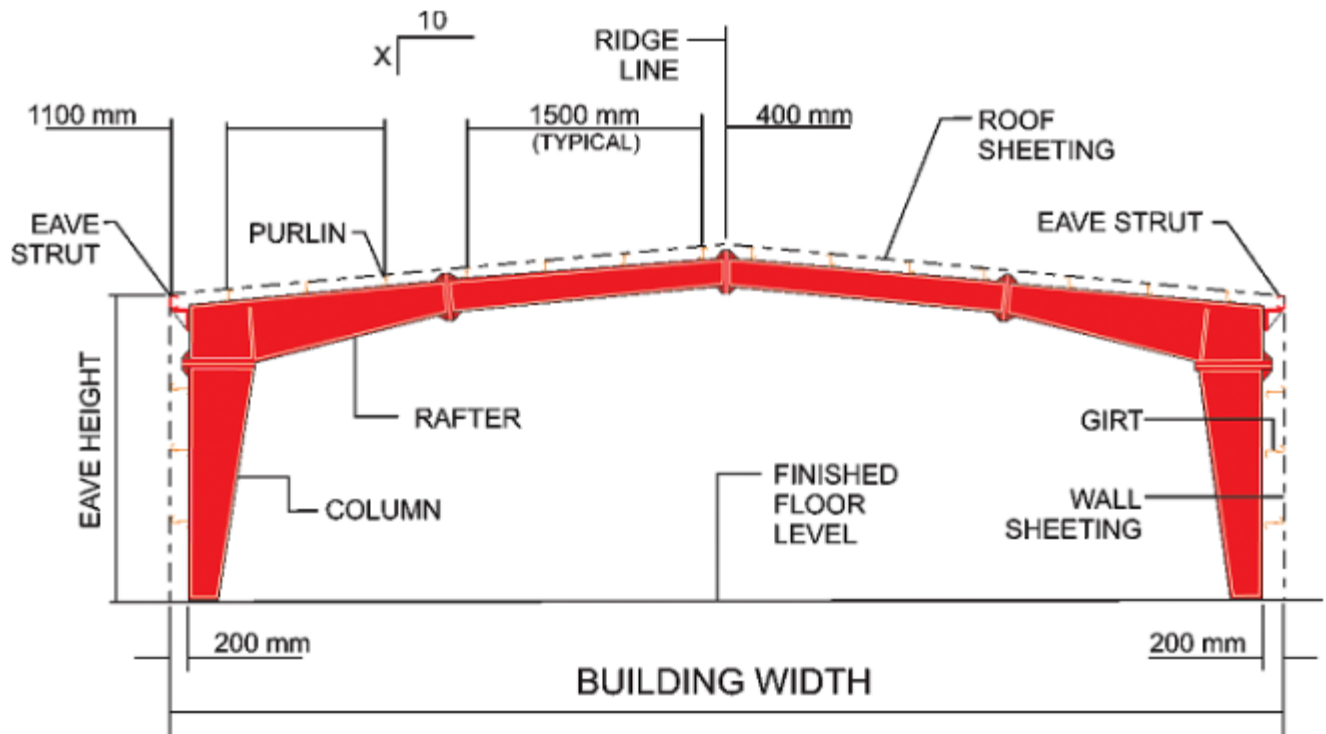
## Primary & Secondary Framing

Structural frame members are separated into two different categories, Primary and Secondary members.

**Primary Frames** are the main load-carrying structural steel components. They may be Clear-span Rigid Frames, Continuous Beam Frames, or Post & Beam Frames.

Primary frames are designed in accordance with the steel construction manual published by American Institute of Steel Construction (AISC). Manufacturing dimensional tolerances are in accordance with the requirements of 'Metal Building Manufacturers Association' (MBMA) of USA, "Low Rise Building Systems Manual". Besides AISC and MBMA, we also design buildings with IS-875, 1984 and IS-875, 2007.

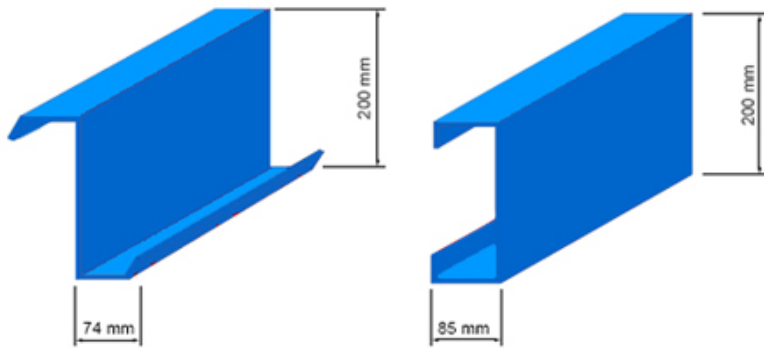
Built-up sections are fabricated from hot rolled steel plates confirming to ASTM A 572M grade or equivalent with minimum yield strength of 345N/mm<sup>2</sup> (50ksi).



## Secondary Framing

Secondary Framing Members are the structural members which carry loads to the primary framing members. Secondary structural framing refers to C sections and Z sections, Girts, Eave struts, Wind bracing, Flange bracing, Base angles, Clips and other miscellaneous structural parts.

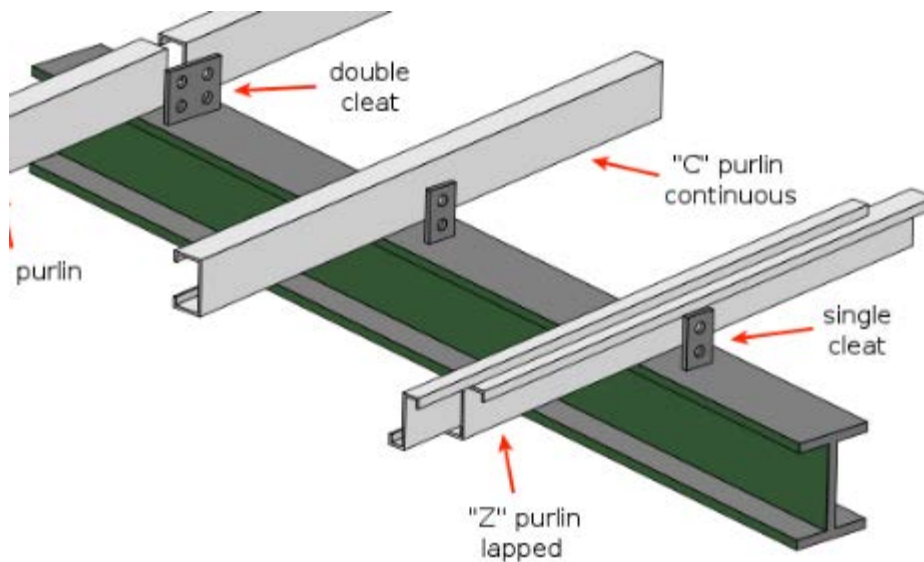
### C- Sections & Z – Sections



Typical "Z" section

Typical "C" section

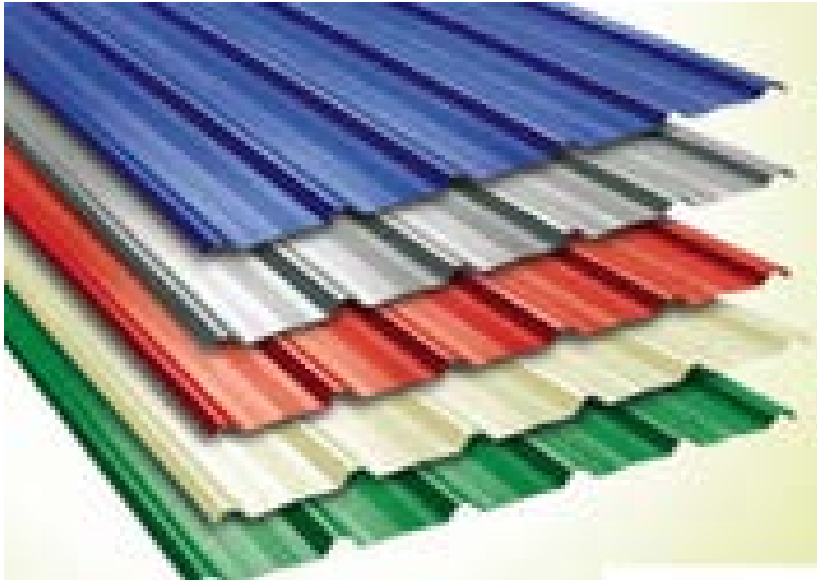
Standard C & Z sections and Girts are roll-formed Z- sections with 64 mm flanges 200 mm deep. Eave struts are 200 mm deep with 100 mm wide top flange. Cold-formed members are designed in accordance with the American Iron Steel Institute (AISI).



The material of cold- formed members conforms to ASTM A653M grade SS 340 class 1 or equivalent with Zinc coating to Z 275 designation (275 g/m<sup>2</sup>). We supply, zinc coating which is 120gsm, 180 gsm and 275 gsm as per requirement.

## Roof and Wall Sheeting

Roof and wall panels are roll- formed sections for 0.47 mm to 0.5 mm thick Aluminium & zinc color coated steel. Standard roof panels are made from bare Aluminium & zinc coated steel. Panel paint film thickness is 25 microns on the exterior weather face and 5-7 microns of PU compatible epoxy primer on the interior face. The sheeting material is cold rolled, high tensile 550 Mpa yield stress, with hot dip metallic coating of Galvalume 150 gm/m<sup>2</sup> total, AZ 150 as per ASTM A792 or AS 1392, and wall coated with 25 microns regular modified polyester paint system applied on Zinalume.



**Ayush Enterprises** offers a various of panel profiles that is used in all the cladding applications, this strong and attractive wall and roof panels are made from bare AluZinc coated steel. These Roofing Sheets have excellent corrosion and weather resistance longer spanning capability, Thermal Efficiency, Long Durability & Safety



Client :- Power Electronics  
Completed Project in year 2015  
Area : 10274 Sq Ft  
Scope :- PEB & CIVIL Work



Client :- Varute Sir  
Completed Project in year 2015-16  
Area : 9800 Sq Ft  
Scope :- PEB & CIVIL Work



## PEB STRUCTURE ERECTION PICS



# COMPLETED PROJECTS

Sr. No	Year	Name of Client	Consultants	Nature of work	Duration
1	2015-16	Sulzer Shikrapur	Kalinda technical services & consultancy	Industrial Shed in PEB ( Area 20000 sq ft)	3 Months
2	2015-16	Nutan Chemicals , Supa	Kalinda technical services & consultancy	Industrial Shed in PEB ( Area 10000 sq ft)	3 Months
3	2015-16	Vinod Fertilizers	Aayush Enterprises	Industrial Shed in PEB ( Area 6000 sq ft)	2 Months
4	2015-16	Modern English School, Belwandi	Inventa engineers	Industrial Shed in PEB ( Area 5000 sq ft)	2 Months
5	2015-16	Mahavir Balai Foods, shahajpur	Kalinda technical services & consultancy	Industrial Shed in PEB ( Area 17092 sq ft)	3 Months
6	2016	Pragati ISPAT Udyog Chakan	Antarkar consulating ehineers	Industrial Shed in PEB ( Area 40000 sq ft)	4 Months
7	2016	Sagar Industries, kuruli	Aayush enterprises	Industrial Shed in PEB + Civil ( Area 10000 sq ft)	3.5 Months
8	2016	Vinayak Industries, Chakan	Aayush enterprises	Industrial Shed in PEB ( Area 25000 sq ft)	3 Months
9	2016	Ekvira Coats, Nashik	Kalinda technical services & consultancy	Industrial Shed in PEB ( Area 22000 sq ft)	3 Months
10	2016	Mac Steel, Nashik	Kalinda technical services & consultancy	Industrial Shed in PEB ( Area 22000 sq ft)	3 Months

Sr. No	Year	Name of Client	Consultants	Nature of work	Duration
11	2016-17	Special Copper Chakan	S.M. Ghanekar	Industrial Shed in PEB ( Area 14000 sq ft)	2 Months
12	2017	Darekar Heat Treatment	Aayush enterprises	Industrial Shed in PEB + Civil ( Area 9000 sq ft)	3 Months
13	2017	Watermark, Bavdhan	Landmark india	Nissan Car Showroom in PEB	2.5 Months
14	2017	Varroc Office Chinchwad	Meta Arch	Office Building 15000 Sq ft	2.5 Months
15	2017	OLCI Engineering Chakan	Meta Arch	Industrial Shed in PEB ( Area 40837 sq ft)	3.5 months
16	2017	Glorial Engineering ,chkhali	Antarkar consulating enhineers	Industrial Shed in PEB ( Area 7000 sq ft)	2.5 Months
17	2017	Sai Plastic, Bhosari	Aayush enterprises	Industrial Shed in PEB + Civil ( Area 10000 sq ft)	3 Months
18	2017	Oriental Veener Products Ltd	Struscale, pune	Industrial Shed in PEB ( Area 23736 sq ft)	In- proess
19	2017-18	Dura Build Technologies, ranjangaon	S.M.Kanitkar	Industrial Shed in PEB ( Area 30000 sq ft)	In process
20	2017-18	Shree pressings, wasuli, chakan	aayush enterprises	Industrial Shed in PEB + Civil ( Area 6000 sq ft)	In process



# CLIENTS



## SULZER



## DAREKAR HEAT - TREAT



AN ISO 9001 - 2008 COMPANY



**Factory & Office Address:**

GAT NO. 175, GANESH NAGAR, BEHIND MSEB OFF, RUPINAGAR, TALAWADE, PUNE-411062

**Mail-Id:-** [info@aayushpeb.com](mailto:info@aayushpeb.com); [sales@aayushpeb.com](mailto:sales@aayushpeb.com)

**Website:-** [www.aayushpeb.com](http://www.aayushpeb.com)

**Contact's No.** + 91 7507778562 /8380015680